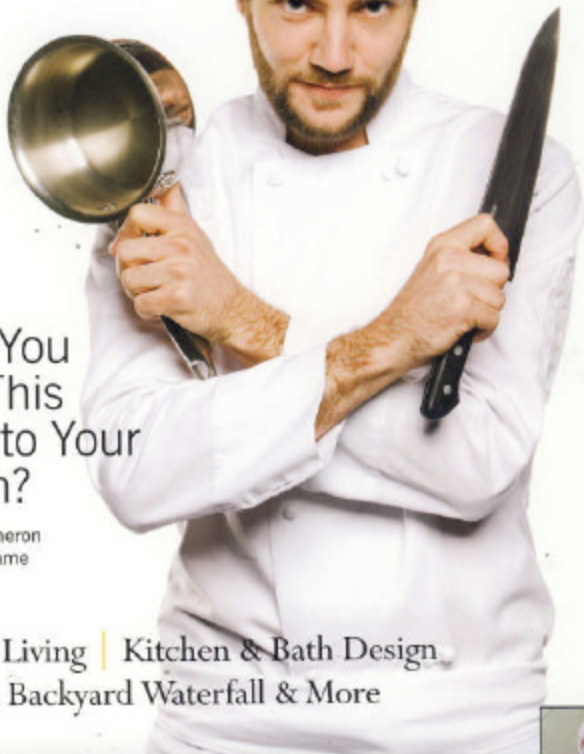


JOYCE REY presents

The High End

Insights Into Extraordinary Living



Would You
Invite This
Man Into Your
Kitchen?

Chef Marcel Vigneron
of "Top Chef" Fame

European Living | Kitchen & Bath Design
Your Own Backyard Waterfall & More

Joyce Rey COLWELL BAKER PREVIOUS INTERNATIONAL • 310.285.7529 • joyce@joycerey.com • joycerey.com





Integrated Storage

Maintaining the clean, uncluttered look popular today means everything has to be stowed. Here too, consumers have function and convenience as a priority. From backsplashes that double as storage spaces to built-in organizers and pull-outs, manufacturers are working to put every inch to good use. Häfele America's newest hardware allows sliding doors to sit flush, maximizing available space by opening sideways instead of outward. Tilt-up hinges give easy access to wall cabinets and can remain open during meal prep.

At Dwell on Design in Los Angeles, visitors were surprised to see a countertop in one kitchen slide sideways to reveal a Miele cooktop and downdraft. Created by Bradco Kitchens and Baths, this remote-controlled, motorized countertop is getting lots of kudos as one of the best from this show.